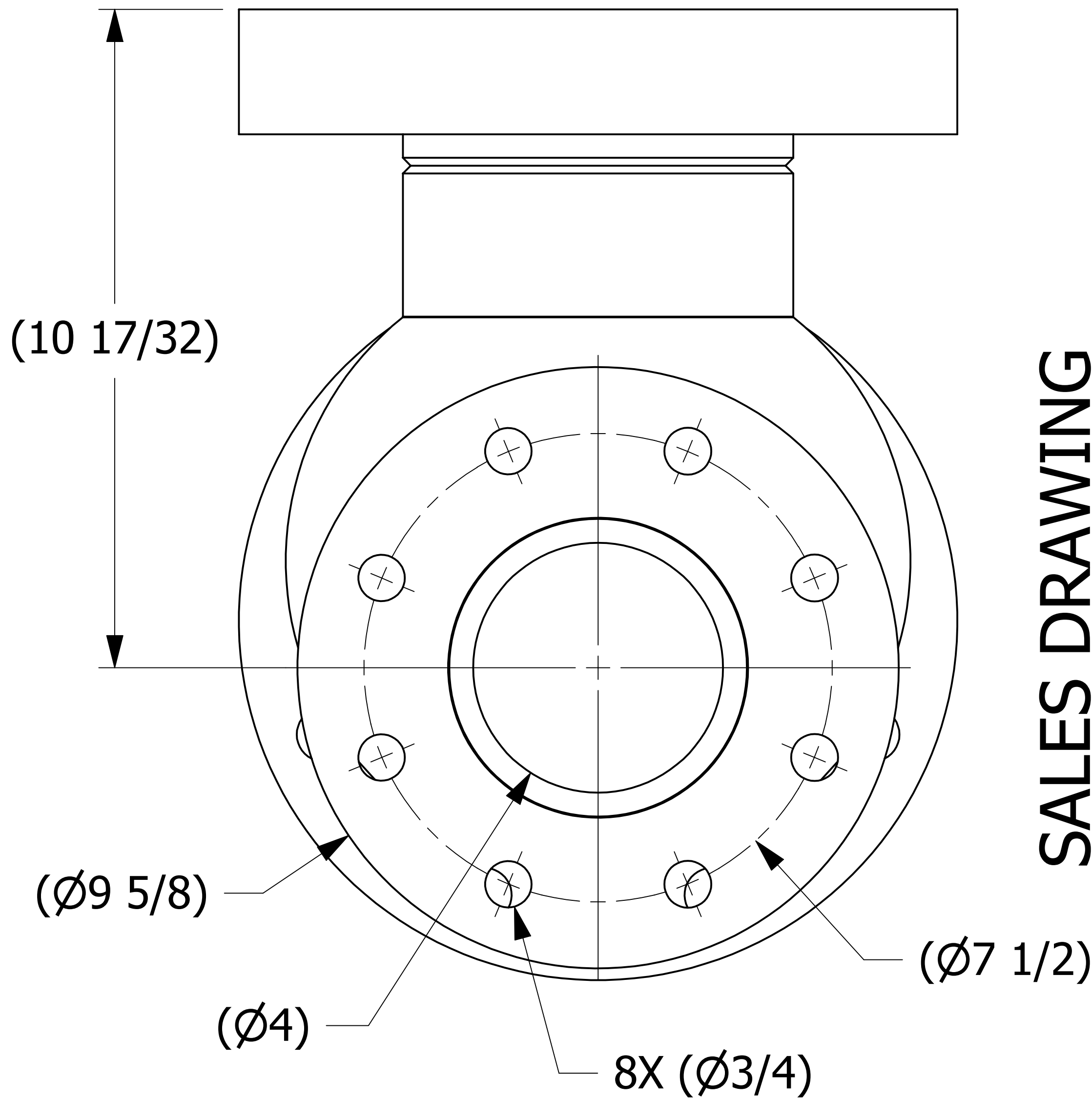
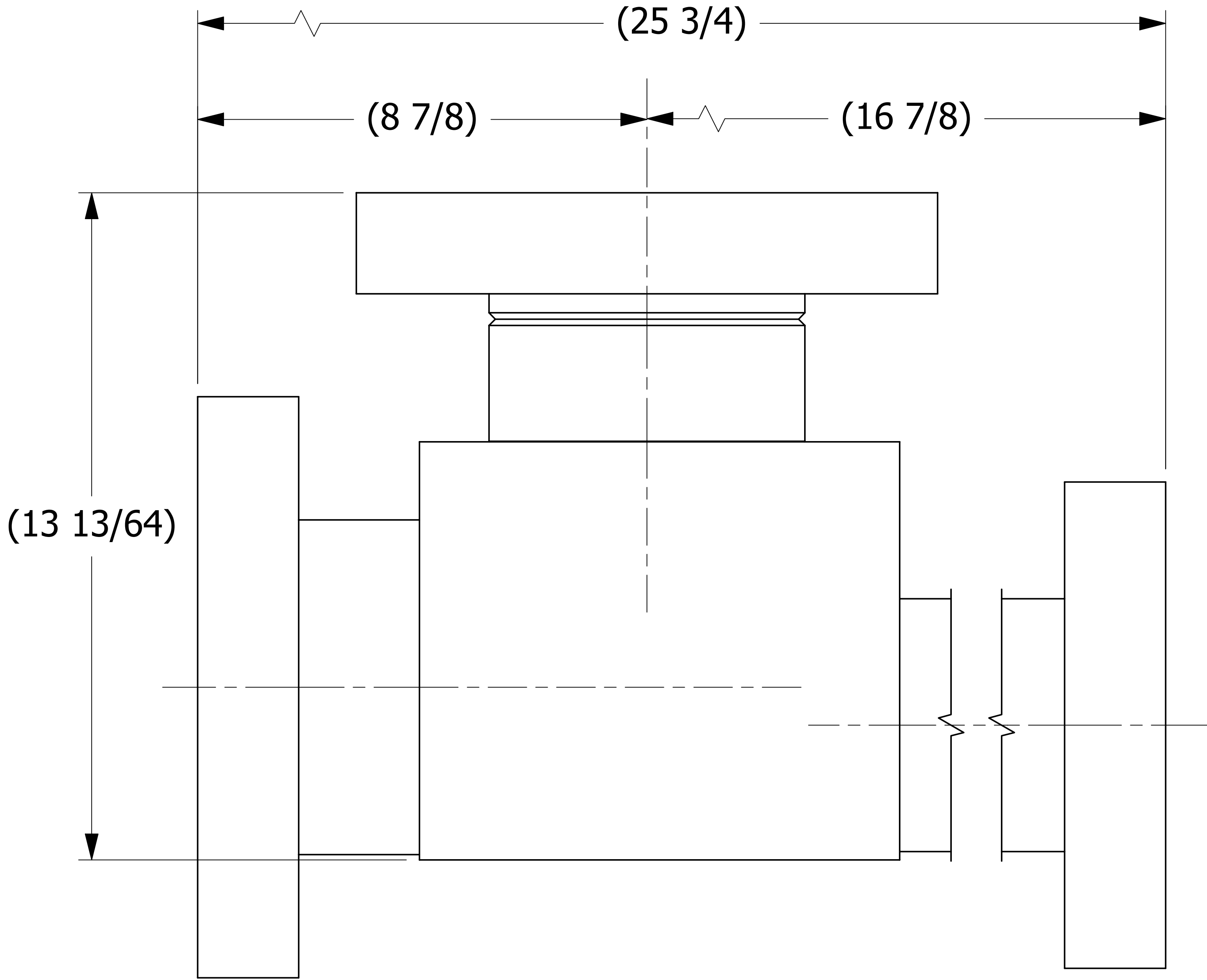
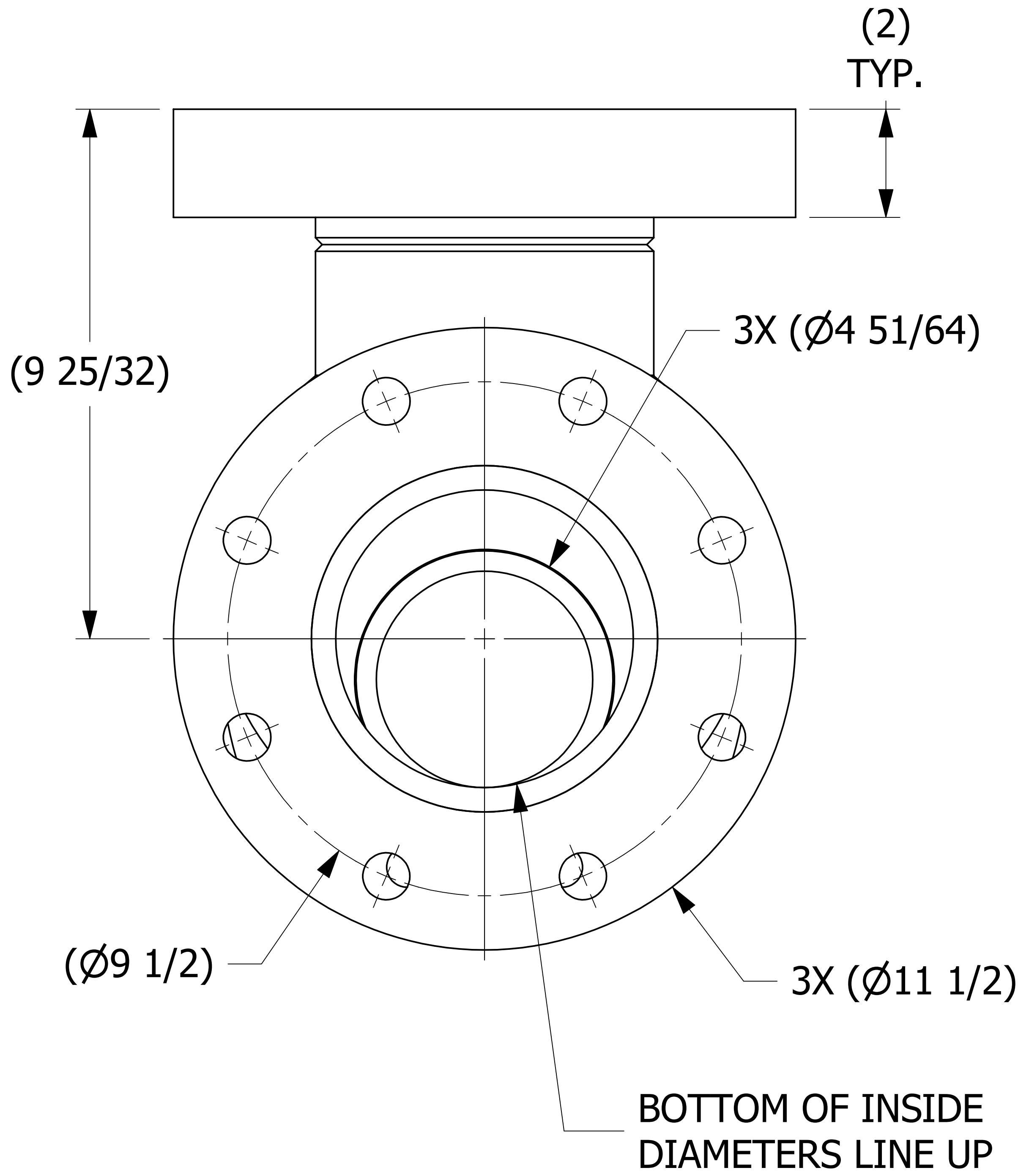



SALES DRAWING



SALES DRAWING

UNLESS OTHERWISE SPECIFIED DIMENSIONAL TOLERANCES FRACTIONAL: $\pm 1/16$ X.XX: $\pm .03$ X.XXX: $\pm .015$ ANGULAR: $\pm 1^\circ$ DEBURR ALL SHARP EDGES. ALL MACHINED SURFACES TO HAVE A 125 RMS FINISH UNLESS NOTED OTHERWISE.	DRAWN BY:	CHL
	CHECKED BY:	PJG
	PROTOTYPE BY:	CHL
	PROTOTYPE DATE:	5/14/2009
	APPROVED FOR PRODUCTION BY:	PJG
THIRD ANGLE PROJECTION	PRODUCTION DATE:	4/13/2010

D	KHK	3-8-13	UPDATED TO CURRENT DRAFT STANDARDS, TITLEBLOCK, NOTE, 4.750 WAS 4.765.
C	GDS	8-1-11	ADDED MARKING PRESSURE NOTE
B	REH	12-1-10	REPLACED HS6DTFL W/ HS6FLGS, REPLACED HS4DTFL W/ HS4FLGS, UPDATED VIEW AND NOTES
A	CHL	4-13-10	NEW PART ADDED TO SYSTEM
REV	BY	DATE	DESCRIPTION

 SALCO PRODUCTS, INC.			
PART NAME: PIPE TEE 6"X4"			
MATERIAL: SEE BOM			
PROJECT #:	090428	SHEET #:	1 OF 1
DRAWING #:	E31162	PART #:	HS6X4PT1
		SCALE:	2:3